

 DebugMode ^{2.0}
Wink
User Guide

<http://www.debugmode.com>

Wink™ © 2003-06 Satish Kumar. S. All rights reserved.

User Guide © 2003-06 Bent Møller Madsen, Linda Worthington & Satish Kumar. S

DebugMode

Wink™ 2.0 User Guide

Copyright © 2003-06 Bent Møller Madsen, Linda Worthington & Satish Kumar. S.
All rights reserved.

The information in this document is furnished for informational use only, is subject to change without notice, and should not be construed as a commitment by the author. The author assumes no responsibility or liability for any errors or inaccuracies that may appear in this document. The software described in this document is furnished under license and may only be used or copied in accordance with the terms of such license.

Macromedia® and Macromedia® Flash® are trademarks of Macromedia, Inc. and may be registered in certain jurisdictions. Adobe® and Adobe® Reader® are trademarks of Adobe Systems Incorporated that may be registered in certain jurisdictions. Microsoft® and Microsoft® Windows® are trademarks of Microsoft Corporation that may be registered in certain jurisdictions. All other products or name brands are trademarks of their respective holders and are acknowledged.

Table of Contents

1	Introduction	4
1.1	About Wink™	4
1.2	Requirements	4
1.3	Installation	4
1.4	New features in version 2.0	5
1.5	Differences between Windows and Linux versions	5
1.6	Using this guide	5
2	Basics	6
2.1	How to use Wink	6
2.2	Your first Wink project step-by-step	7
3	User Interface	10
3.1	Basic UI	10
3.2	New Project Wizard and capturing screenshots	10
3.2.1	Step 1 - Setting up the project	10
3.2.2	Step 2 - Capturing screenshots	12
3.3	Project Settings	13
3.4	Palette	15
3.5	Editing frames in a project	16
3.5.1	Frame Titles	16
3.5.2	Stay in this frame for time	16
3.5.3	Add Audio	17
3.5.4	Add Image	17
3.5.5	Add Preset Shape	18
3.5.6	Shapes Editor	18
3.5.7	Add Textbox	18
3.5.8	Callout Editor	19
3.5.9	Cursor	22
3.5.10	Next/Previous Buttons	23
3.5.11	Goto Frame Button	23
3.5.12	Background Image/Colour	24
3.5.13	Shift All Elements	25
3.5.14	Crop All Frames	25
3.5.15	Resize All Frames	25
3.5.16	Insert and delete frames	25
3.5.17	Editing the sequence of frames	26
3.5.18	Thumbnails Only View	26
3.6	Rendering the flash presentation	26
3.7	Templates	27
3.8	Export/import text to and from file	27
3.9	Export to HTML, PDF, PostScript and image files	28
3.10	Preferences	28
3.10.1	Flash Preloader	29
3.10.2	Flash Control bar	30
3.11	Shortcut keys	31
3.12	Toolbar	32
4	Tips and Tweaks	33
4.1	Screen size of presentations	33
4.2	Optimal use of input-driven capture	33
4.3	Edit multiple frames	34
4.4	Editing screenshots in frames	34
4.5	How to create more than one textbox in a frame	34
4.6	Copy frames between projects	34
4.7	Optimize the size of presentations	34
4.8	Maximize the space for showing presentations in a browser	34
4.9	Saving compressed projects	35
4.10	URLs of interest	35
5	Known issues	36
5.1	Buttons in PDF files exported from Wink	36
5.2	Flash output sometimes looks garbled with palette	36

1 INTRODUCTION

1.1 About Wink™

Wink is a software tool to make presentations and tutorials about using software programs. A Wink presentation will resemble a live walkthrough about how to use the software. Also the author of the presentation can add comments and explanations to parts of the presentation to better explain the concepts and usage to the end user.

There are many purposes for these kinds of presentations:

- Advertising of software.
- Tutorials of software for classes.
- Documentation of software to supplement written documentation.
- Answer questions about the use of programs visually.

The basic output format of Wink is Flash. Flash is viewed in a web browser using the free Macromedia Flash Player which is already installed on most computers or can easily be installed the first the time the end user tries to watch a flash file.

Wink is actively in development and constantly improving. If you have a comment or suggestion to make or an idea to improve, please make it public by posting in the User Forums at "<http://www.debugmode.com/userforums/>".

1.2 Requirements

When working inside Wink the minimum screen resolution to be used should be 800*600 although it is recommended to use a screen resolution of 1024*768 or better. This will make it easier to edit a presentation with a large area size because you will be able to see full or at least a large part of the current frame.

The minimum and recommended screen resolution doesn't apply when you are capturing screenshots for a Wink presentation. Screenshots could very well be captured with a screen resolution of 640*480 depending on the needs.

1.3 Installation

The installation package comes as a zip file with the install file. Unzip this file into any temporary folder and run the executable to start the installation. If you have an earlier version of Wink installed, this installation may overwrite the settings of the earlier install (similar to an upgrade).

1.4 New features in version 2.0

Wink has been completely rewritten for version 2.0. Currently version 2.0 is available only for Windows; a Linux version will be available soon. The following is a list of the most important new features in Wink 2.0 among many improvements, changes and bug fixes.

- Translated to more languages
- Undo/Redo
- Unlimited textboxes
- Unlimited buttons
- URL Buttons to open a webpage when clicked
- Image objects
- Shape objects, create and use shapes just like callouts with no text
- Audio (can record while capturing, as well as add/edit later)
- Improved and simpler properties panel
- Improved flow of control in output swf file so no more flickering of title/callouts when no buttons are used
- Ability to disable frames in a project so they won't appear in output

1.5 Differences between Windows and Linux versions

Most of the Wink user interface and features are the same in Windows and Linux, but there are a few differences. The key ones are listed below.

- No input-driven capture mode in Linux
- Text fonts in Windows and Linux will be different depending on what is available in the system
- UI widgets will be different in both platforms so there will be minor differences in the functionalities
- Wink system tray icon in Linux will be available only if the window manager supports the required extension

Please note that the UI is very different between the latest Windows version (2.0) and the Linux version (1.5). The above points still apply to the Linux Wink version 1.5.

1.6 Using this guide

This user guide is distributed as a PDF document so that it can be printed as a manual if necessary. It is recommended that you read this document completely before starting to use Wink so that you can work with ease. Also a printout of the shortcut keys will be helpful.

Two tutorial projects are present in this distribution. Once installed, run Wink and choose menu "Help > View tutorial 1". Answer Yes to render the tutorial. You will see the tutorial right after the rendering is done.

The sample projects are named "tutorial1.wnk" and "tutorial2.wnk". These files are present in the Wink\Samples folder. There is also a step-by-step tutorial later in this document.

2 BASICS

2.1 How to use Wink

To create a new presentation in Wink you run your target software and take screenshots with Wink (automatically and/or manually) of each action done in that software. These screenshots will afterwards be put together by Wink into a continuous movie in which each screenshot represents a frame. Frames can be moved, deleted and copied inside the project and between projects.

The mouse cursor's position is saved separately for each frame. This way Wink will take care of making the cursor move smoothly between frames. You can also change the position of the mouse cursor in any frame.

There are several advantages to record presentations using screenshots and not recording the entire presentation as a single movie:

- It is easier to capture screenshots because if you make mistakes (open the wrong file, do the wrong action, forget what to do and thereby making a long pause etc.) in the recording progress you just don't take screenshots of these errors. If you were recording a continuous file you would have to be very prepared in advance to avoid these kinds of recording mistakes.
- When editing the file afterwards there are fewer frames to work with and most frames are important - that is to say that there are only few or none intermediate frames that for instance just show the mouse cursor moving from one place to another.
- The resulting flash file will also be smaller because there are fewer frames in the presentation.

But in some cases it can be useful and easier to just record everything that happens e.g. when drawing or typing text in a program. In this case Wink can be set to either record continuously through timed capture with a certain frame rate or use input-driven capture where screenshots will be captured each time you click with the mouse and/or press a key.

After the recording is done you can edit the sequence of frames and add comments/explanations to each frame as necessary. You can add **Previous** and **Next** buttons to pause the presentation and the user can then go back and forward in the presentation by clicking these buttons. You can add **Goto Frame** buttons that jump to other sections in the presentation. These help to create more advanced presentations with different flows through the content instead of just going from start to finish.

You can customize/personalize the presentation by choosing a static background image for the entire presentation. This can contain the name, logo, copyright messages etc. of the author and/or company.

In order to make consistent presentations you can create templates based on one presentation and then apply this template to all other presentations. This way it is easy to get the same look across presentations and you don't have to do the same customisations each time.

Once you have finished creating and editing a presentation, it must be rendered to a flash file that for instance can be placed on a website or distributed in other ways for the end users/customers to see. The quality and size of the presentation can be adjusted through the number of colours used and the chosen frame rate of the flash file. It is also possible to add both a preloader and control bar to the rendered presentation. A preloader will be shown when the presentation is loading while the control bar shows the progress of the actual presentation and makes it possible to pause at will.

The presentation can also be exported to a HTML, PDF or PostScript file. These exported files can be placed together with the rendered flash file on a website and the end user will then have the option to print the presentation. Each frame in the presentation will become a single image with the comments/explanations and buttons that have been added in Wink. All buttons will still work in the exported files and will jump to the corresponding place (HTML) or page (PDF, PostScript) in the file when clicked.

2.2 Your first Wink project step-by-step

This section will guide you through the process of making your first Wink project. We will make a short presentation that shows how to change the file view in Windows Explorer from icons to details. You can also find a Wink project for this tutorial named "tutorial1.wnk" in the folder "Wink\Samples".

1. Preparing Windows Explorer and Wink for capturing.
 - 1.1. Open Windows Explorer because this is the program we want to show in the presentation.
 - 1.2. Start Wink and create a new project using the menu "File → New". This brings up a wizard that by default sets Wink to capture screenshots of the entire screen. One of the options in this step is to change the capture region to a specific window or part of the screen (rectangle). For this project we will capture the region of the Explorer window so choose the window option.
 - 1.3. Click the "Hide Wink Window" checkbox to see the Explorer window which was hidden behind Wink.
 - 1.4. Click the "Choose" button, move the mouse to the title bar of Windows Explorer and left click to select this window.
 - 1.5. Press OK.
2. Minimize Wink to the system tray (the bottom right corner of screen) by clicking "Minimize to Tray" and we can now take screenshots by pressing the default "Alt + Pause" keys for input-driven capture to make Wink automatically capture screenshots for each mouse click and key press. When using this option you rarely have to think about taking screenshots yourself and the project will typically

also end up containing a few more frames than if you captured manually because more details are recorded.

3. Start the input driven capture by pressing Alt + Pause simultaneously. The system tray icon changes to reflect that we are now using the "input-driven" mode.
 - 3.1 Minimize all windows except Windows Explorer. Place the mouse cursor somewhere in Windows Explorer. The capturing does not start until you click inside the target window. Start by clicking at a random place inside the capture area.
 - 3.2 Move the mouse cursor to the "View" menu in Explorer.
 - 3.3 Open the menu by left clicking.
 - 3.4 Move the mouse cursor to the "Details" menu option.
 - 3.5 Click the mouse to select the Details option. This changes the view to details view.
 - 3.6 Stop the input-driven capture mode by pressing Alt + Pause again.
4. Now we have finished capturing frames. so right click on the Wink icon in the system tray and choose "Finish Capture".
5. Wink will now display the current project. The larger top part of the window shows the last frame in the sequence. In the bottom you can see all frames in the sequence/presentation. The captured mouse cursor is visible with a box around it to easily identify it from the real cursor. In the other frames you will be able to see the progress of the presentation and the movement of the cursor.
6. First we will add a textbox to the first frame explaining what this presentation shows. The textbox displays text in a popup balloon-like element called the **Callout**. A Callout is a group of shapes created using the built-in Callout Editor. Wink comes with many pre-defined callouts you can choose between for the textboxes used in frames, and you can create your own callouts using the Callout Editor.
7. Select the first frame in the thumbnail list shown at the bottom of the window. Now go to the **Properties bar** (the bar on the right of the Wink window) and click the *Add Textbox* button. The textbox will be displayed with a default (the last used) callout in the frame. You can now double click the textbox in the frame and type the text (something like "How to change file view in Windows Explorer") inside it. You can resize the callout in the frame, move it to another position, choose another callout by clicking the button showing a speech bubble and edit the font by clicking the button showing an E.
8. Now we will add a Next button that the end user can use to start the presentation and a Goto button to return to the start from the last frame (in this simple presentation a back button would also return to the first frame). Select the first frame in the sequence and click the Add Next button in the properties bar. The newly added button is by default placed at the center and you can move it to any place you desire.

9. In frame 5 we will set a value for how long to stay before continuing to frame 6. This way the viewer gets time to comprehend what option we are clicking in the presentation. Change focus to the "Stay in this frame for" box located on the **Properties bar** and type in the value 1.
10. Select the last frame and click the Goto Frame button in the properties bar. Then select the frame it should go to (in this case it is frame 1).
11. To tell the end user what this Goto button does, we will add a textbox to this frame with the text "Replay presentation". The text box and the Goto button should be placed so that the button is inside the text box area either to the right of or below the actual text.
12. Before going further we will save the project using the menu "File → Save". You should save your project often when editing the project.
13. Choose menu "Project → Settings". Type the name for the output flash file (for instance "Explorer_views"). If you just specify a filename, the output flash file will be saved in the folder where the project is saved (or the desktop if you haven't saved the project yet). Press OK when you have typed a name.
14. Choose menu "Project → Render" or press the green arrow in the toolbar to create the presentation as a Flash file.
15. **Congratulations** - you have made your first Wink presentation. You can view it through "Project → View Rendered Output". This will open your browser and you should see the presentation being displayed or if you do not have Macromedia Flash Player installed you would get an option to install it.
16. In the folder where the flash file was generated/saved you will see that besides the actual flash file Wink also generates a HTML file with the same name to open the flash file in the correct size. When putting a presentation on a webpage you should link to the HTML file and not directly to the flash (swf) file.

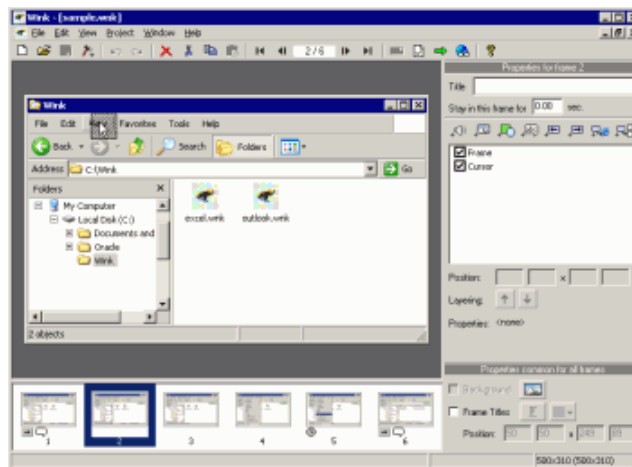
You have now seen and tried some of the options in Wink. Continue reading the next chapter to get more information about the user interface and options in Wink to improve your skills in making great Wink presentations.

3 USER INTERFACE

3.1 Basic UI

When you first start Wink you will see a menu and a toolbar at the top of the window. To the right is the **Properties bar** where individual and common properties for all frames are accessible. It is possible to see and edit the position and properties of all elements added to a frame.

The language used in the user interface can be changed from the menu “File → Choose Language”.



The project window is divided into two parts:

- In the work area at the top you see the currently chosen frame in normal size and the elements that are added to the frame can be moved and resized with the mouse.
- The thumbnail list at the bottom shows thumbnails of all the frames in the current project. You can drag-and-drop frames within this list or between projects and select which frame you want to edit in the work area.

More than one project can be open simultaneously in Wink, which makes it possible copy frames between projects.

3.2 New Project Wizard and capturing screenshots

3.2.1 Step 1 - Setting up the project

When creating a new project you will see the "New Project Wizard" with options to start capturing screenshots or just create an empty project.

Normally you would want to capture screenshots for the new project through Wink. If you just want an empty project you must uncheck the "Start by capturing Screenshots" option. An empty project is useful if you want to copy frames from other existing projects or if you already have captured screenshots as single images with another program and now want to use them in a Wink project.

When creating a new project you can capture audio along with the screenshots (or you can add audio later). Use the 'Record Audio' option to enable/disable audio capture.



When capturing screenshots with Wink there are 3 ways to specify the capture area:

- Screen: The entire area of the screen.
- Window: Use the Choose button and a rectangle will show the area of the window/program being captured. If you want to capture an entire window you should move the mouse cursor to the window's title line.
- Rectangle: Use the Choose button to draw a rectangle around the area that must be captured or use one of the supplied default sizes.

To easily identify the area that should be captured for the project you can click the "Hide Wink Window" checkbox. (This will not hide the New Project Wizard dialog.) After defining a capture area (except the entire screen) you can still easily adjust the chosen area by dragging the green borders identifying the area or by editing the region values in the dialog.

At the bottom of this dialog you can change settings for the two automatic capture modes. For timed capture it is possible to define how often captures should be made. This can be a rate of a number of frames per second, minute or hour. Regarding input-driven capture this can be set to capture screenshots at all mouse clicks and/or all key presses.

Press OK to go to Step 2 of the New Project Wizard (if you have chosen to capture screenshots). If you deselected the checkbox for "Start by capturing Screenshots" you will be brought back to Wink and see an empty project.

3.2.2 Step 2 - Capturing screenshots


Wink is now in capture mode. You can see the hotkeys available to either capture screenshots manually or start/stop one of the two automatic capture modes. In the bottom of the dialog you can see how many frames have been captured until now.




In most cases you would now want to minimize Wink to the system tray so that Wink itself isn't visible in the screenshots.

When minimized Wink is shown as an icon in the system tray. You can right click this icon to capture a screenshot, finish the capture session, cancel the capture session or restore the capture window (to see how many frames have been captured).

There are 3 different way to capture screenshots for a project and you can change between them in the same capture session.

 **Manual screen snapshots** – Each time you press the hotkey (default: Pause) the current content of the screen is captured to a frame in the project. The Wink icon in the system tray will blink momentarily to indicate this. If you want to use this mode exclusively you have to take screenshots after all actions done with the mouse and keyboard and furthermore also each time the mouse cursor has moved from one position to another.

 **Timed capture** – When activated with the hotkey (default: Shift + Pause) Wink will continuously capture screenshots with a certain capture rate that is specified in the previous step until you stop it again with the same hotkey. The Wink icon will be replaced by an animation that updates with the speed of the capture rate. For tutorials it is not very efficient to only use this mode because it will quite certain record many unnecessary frames but it can be effective for small parts of a project showing for instance how to draw in a program. This mode is also useful for tracking the behaviour of programs/installations that runs for a long time. In this

case you could set the capture rate in the previous step to only record a given number of frames per minute or hour instead of frames per second.



Input-driven capture – Using input-driven capture Wink will automatically try to capture all the relevant frames while you do the actions that should be recorded. It can record all mouse clicks and/or all key presses (with the exception of some default and user-defined key combinations) based on the choice in the first step of the wizard. This mode is started and stopped through a third hotkey (default: Alt + Pause) and the icon in the system tray will change to show when it is activated. Like with manual screen snapshots the icon will blink each time Wink captures a screenshot but in this case not all the screenshots are actually converted into frames in the project since Wink will only save a screenshot if it is different from the last one.

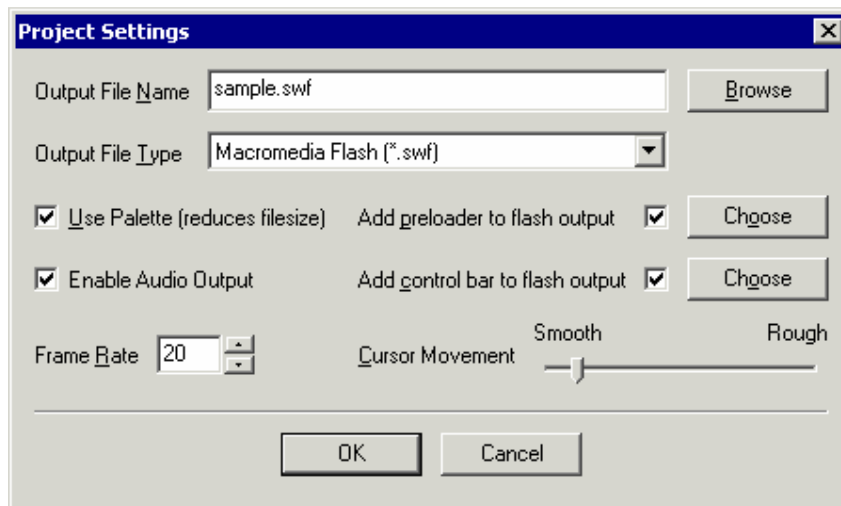
When using input-driven or timed capture mode, you can force captures at any time using the manual screenshot hotkey.

When you have finished capturing screenshots you must right click the Wink icon in the system tray and choose Finish (or Restore Capture Window and press the Finish button here). This will end the capture session and you will see the project window. It will take a little while to generate all the thumbnails depending on the number of frames and the speed of your computer.

If you choose to cancel the capture session no new project is created and all captured screenshots will be lost.

3.3 Project Settings

Project Settings can be opened through the menu “Project → Settings”. In the first field you must specify the name of the output flash file to create when you render the project. If only a file name is specified the file will be created in the folder of the project file (or the desktop if you haven’t saved the project yet).



Output file type can be Macromedia Flash (.swf) to show on web pages, a self-playing Flash executable (.exe) that you can view directly on any PC or a uncompressed Flash animation (.swf) which can be imported in other Flash tools.

The Use Palette option specifies if the project should use a Palette when generating the flash file. Without using a palette the presentation will use all the colours seen in the individual frames. By adding a palette Wink reduces the total number of colours used throughout the presentation to a maximum of 256 colours. (You can define the number of colours in a palette to be between 1 and 256 colours.)

The purpose of reducing the number of colours is to reduce the file size of the rendered flash file. Dependent on the number of colours in the frames you might not be able to see any difference in the rendered presentation than if not using a palette. If there are photos or gradients between colours in any frames the effect of using a palette will be more visible in the presentation. The creation of the actual palette is shown in the next section.

The Enable Audio Output option is used with projects containing audio and specifies if Wink should include audio in the output file. If this option is not enabled the project's audio will not be included in the output This option is not available for projects that do not contain audio.

The Add preloader to flash output option is used to choose if a preloader will be used in the output file and if so which preloader will be used. To choose a different preloader click the Choose button. In the Choose Flash Preloader window you can choose one of the available preloaders, create a new preloader or edit the preloader of your choice. For more detailed information on the Flash preloader see section 3.10.1.

The Add control bar to flash output option is used to choose if a control bar will be used in the output file and if so which bar will be used. To choose a different control bar click the Choose button. In the Choose Flash Control Bar window you can choose one of the available control bars, create a new control bar or edit the control bar of your choice. For more detailed information on the Flash control bar see section 3.10.2.

Frame Rate determines the speed of the presentation in frames per second. This setting is highly related with the Cursor Movement setting. So if you want smoother cursor movement and move the slider to the left you will also have to increase the frame rate to make the mouse cursor have the same speed in the final presentation as the original setting. For a more thorough explanation see the gray box below.

The connection between Frame rate and Mouse Cursor Movement

If the mouse cursor moves from one position to another between two frames, Wink will generate intermediate frames while rendering to show the cursor movement. A more smooth Cursor Movement setting will generate more intermediate frames. But if we add more intermediate frames and don't increase the frame rate correspondingly the movement of the cursor in the flash file will also be slower.

For instance if Wink normally generates 16 intermediate frames between 2 frames in the project and we use the default frame rate of 8 frames per second it will take 2 seconds for the cursor to move from the start position to the end position. If we now change the Cursor Movement to be smoother Wink may now generate 32 intermediate frames between the 2 original frames. With the default frame rate of 8 frames per second it will now take 4 seconds for the cursor to move from the start position to the end position. If we want the final

presentation to keep the same speed as with the original smoothness setting we will have to change the frame rate to be 16 frames per second instead.

This relation is described in the following formula:

Frame rate / Smoothness of cursor movement = Speed of mouse cursor in presentation

Higher frame rate → Faster mouse cursor

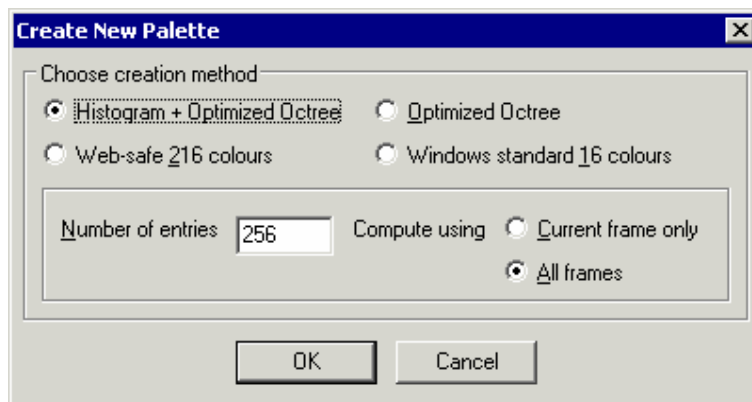
More smooth cursor movement → Slower mouse cursor

3.4 Palette

If you have chosen to use a palette in the Project Settings you can create or edit a current palette by choosing menu “Project → Edit Palette”. Also if you have chosen to use a palette but have not created one before rendering you will be shown this dialog. For best results postpone the palette creation until all editing in the project is done.

The first time you will see an empty palette. You can actually change the number of entries and choose each colour manually but that is not recommended. Click the “Create New” button and let Wink create the palette from one of 4 methods.

- Histogram + Optimized Octree: This is the recommended setting to use as it normally gives the best result for the rendered output. ¼ of the palette is filled with the most frequently used colours in the frames (using a histogram) while the rest of the palette is based on an optimized octree calculation.
- Optimized Octree: With this setting the entire palette is based on an optimized octree calculation and the result is normally also very good but sometimes there can be problems with frequently used colours in the rendered output.
- Web-Safe 216 colours: Standard colours used and supported by all browsers and web tools.
- Windows Standard 16 colours: If you want to support old systems that can only show 16 colours.



For both “Histogram + Optimized Octree” and “Optimized Octree” you can choose how many colour entries there should be in the palette. The default setting of 256 entries and the option to use all frames should be the best setting in almost any case.

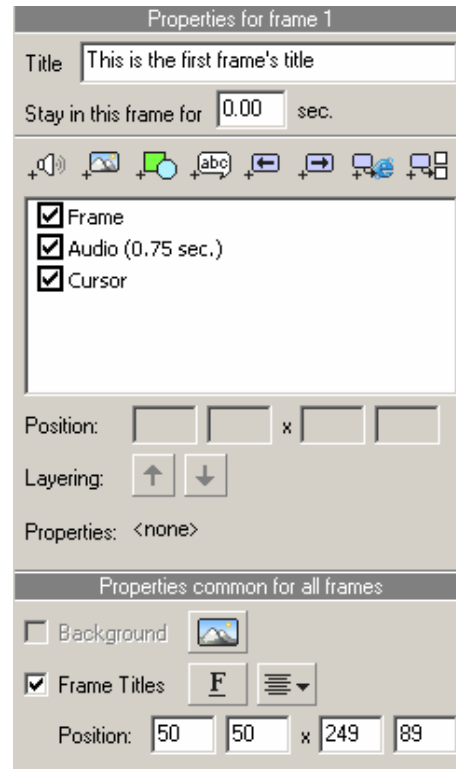
When the palette is created you can edit the individual colours by double clicking them. You can also save and load palettes. This can be useful if you are trying to see the effect of different palettes in the rendered presentation.

3.5 Editing frames in a project

Most of the time spend in Wink will be used to edit frames in the project i.e. adding/removing elements to the frames.

Almost all options regarding this are available in the properties bar (Some are also available in the menus and a few are *only* available through the menus). The properties bar can be displayed through the menu “View → Properties Bar”.

Properties of each element in the frame can be viewed/modified by selecting the item in the list. You can also modify the position/properties of elements, layer objects of the same kind, enable/disable objects and entire frames across multiple frames in a single step. See the Tips and Tweaks chapter to learn how to do this.



3.5.1 Frame Titles

Frame titles are used to display a title/headline for individual frames. They can be enabled for all frames using the checkbox in the common properties section of the properties bar. You can change the font used for titles using the choose font button (F) and alignment of the titles using the alignment button (next to the choose font button).

The actual title for the current frame is typed in the **Title** field at the top of the properties bar. By default the field for the frame title is placed in the top left area of the frame (50 pixels to the right and 50 pixels down from the top left corner) but you can move and resize it as needed by using the resize handles or using the Position fields to enter new pixel sizes. Titles appear in the same position in all frames.

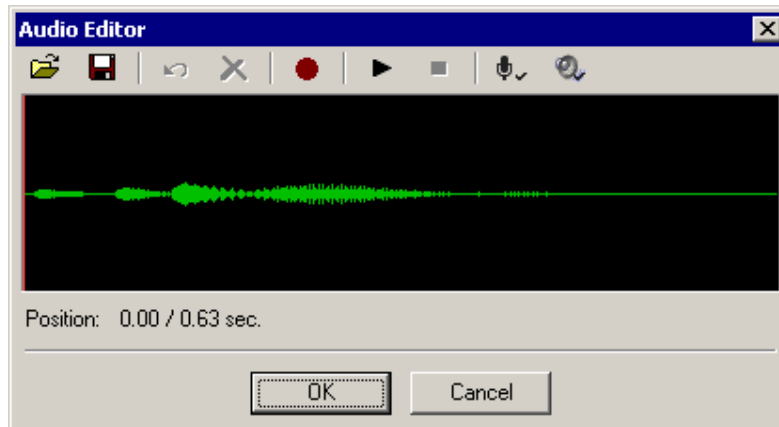
If you haven't typed a title for the current frame you will see the text: "The frame's title will come here...". This default text will not be displayed in the rendered flash file.

3.5.2 Stay in this frame for time

This field is used to add a pause for some time before showing the next frame. When adding small pauses between frames it gives the end user a little more time to comprehend what is being shown in a presentation and it can also be useful to make the presentation look more real. The pause value is specified in seconds (e.g. 1.5 seconds).

3.5.3 Add Audio

The Add Audio button opens the Audio Editor window. This window allows you to add audio files in WAV (.wav) and MP3 (.mp3) formats, record audio for the frame, play the audio file associated with the frame and adjust record/playback settings.



You can use the audio editor to do the following:

1. Record audio (using the red Record button in the middle): this will start recording audio until you click the stop button.
2. Play existing/recorded audio (using the Play button)
3. Import audio from external .wav and .mp3 files
4. Export/save audio to external .wav files
5. Delete unwanted regions from the audio stream: to delete a block of audio, you first have to select the block of audio by clicking at the start of the region and dragging the mouse until the end of the block to delete. The selected block will be shown in a different colour. You can delete the selected block of audio by clicking the red Delete button, and to undo a previous delete use the Undo button. Typically this is used to delete silence regions in the audio.

Note: When importing audio from an external .wav or .mp3 file, Wink will read the audio at a sampling rate of 11025 Hz and will display a warning message if the original audio did not match this rate. This sampling rate of 11025 Hz is sufficiently good for speech and other related sounds (but not for music) so if the imported audio does not sound as good as the original, please convert the audio externally to this sampling rate and then import into Wink.

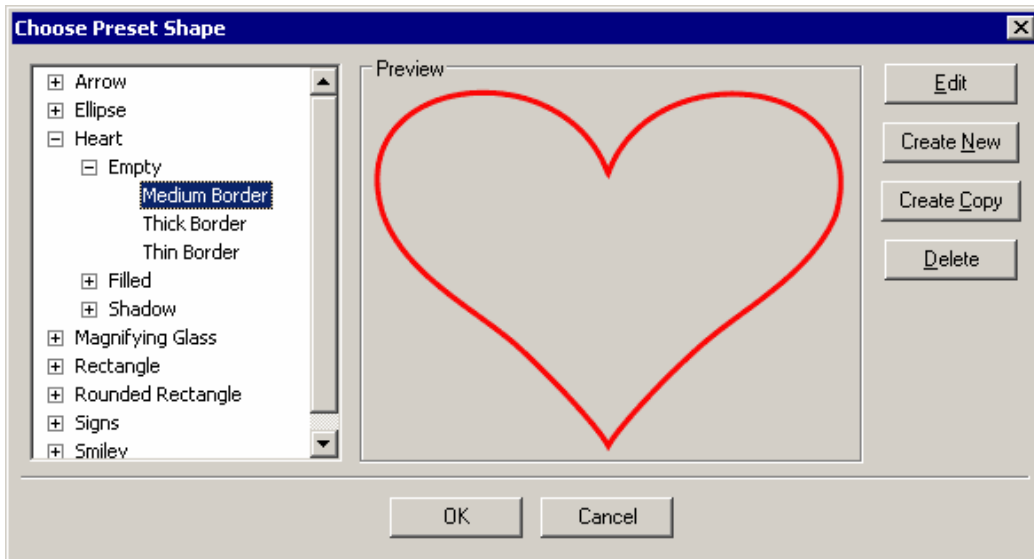
3.5.4 Add Image

The Add Image button allows you to add an image to the frame. In the **Properties bar** choose the Add Image button. You now have the option to browse to your image and click Open. The image is now located within the frame. You now have the options to move or resize the image. To move the image, place the mouse over the image, hold down the left mouse button and move to the desired position. To scale the image hold down the Shift key and drag from the side of the image, not the corner. The image will resize the same amount on all sides. If you drag from the corner, the image may look distorted as the scale will not be proportional.

The opacity of the image can be changed by entering a number in the box beside % opaque on the Properties bar. If you choose to reset the image to it's original size, click the Reset to original size button.

3.5.5 Add Preset Shape

The Add Preset Shape button opens the Choose Preset Shape window which allows you to add a shape to the selected frames and create/edit shapes.



To add a shape click the Add Preset Shape button in the properties. This opens the Choose Preset Shape window where you can choose between the available shapes and see a preview of them. You can also create new and edit existing shapes (described in the next section). The order of shapes in the tree is defined through the name of each shape where dots '.' splits the name into folders, subfolders and the actual shape. So for instance the name "Arrow.Down.Thin Border" first creates a folder named "Arrow", under this you will find a subfolder called "Down" and finally the actual shape is called "Thin Border".

To change a shape double-click itself in the main view or select the shape in the main view and click the Choose Shape button located on the properties bar. Both options will open the Choose Preset Shape window. Also located on the properties bar are options that allow you to set the opacity of the image, placement and size of the image as well as changing the colours.

3.5.6 Add Textbox

Textboxes are often the most important element in a presentation because they allow you to increase value by adding comments and explanations to the content in the individual frames.

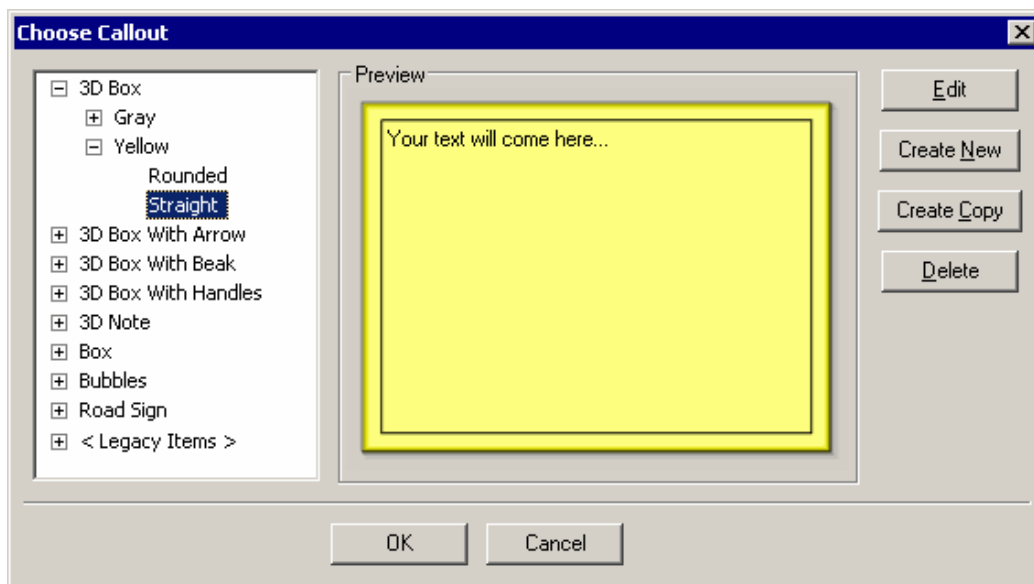
A textbox consists of a callout and the actual text. The callout is the graphical shape inside which the text is placed and it can be anything from a plain rectangle to fancy speech bubbles. A number of standard callouts are supplied with Wink but it is also possible to design your own callouts with the Callout Editor.

You can add/remove a textbox in a frame by clicking the button in the Properties Bar. A new textbox uses the same callout that was used last time. The textbox can be moved and resized using the mouse or by editing the position values in the advanced properties bar.

To add/edit text in a textbox you can either double click it in the frame or click the Add Textbox button in the properties bar. When editing a textbox a toolbar will be shown right above the text area allowing you to easily change font, font size, font colour and if the text should be bold, italic or underlined. Each of these options always works for the entire text in a textbox. Clicking outside the textbox after editing or clicking the diskette button in the toolbar keeps the changes made and clicking the red X will cancel changes to the text. If you have added more text than can fit in the textbox Wink will automatically resize it when you decide to keep the changes.

You can change the text font while editing the text and also by using the choose font button (F) in the properties bar. Finally the alignment of the text in the textbox can be changed using the text align button in the properties bar. Textboxes can also be copied between frames like other elements.

You can change the callout using the button showing a speech bubble in the properties bar. This opens the Callout Chooser where you can choose between the available callouts and see a preview of them. This window also allows you to create new and edit existing callouts using the Callout Editor described in the next section. The order of the callouts in the tree is defined through the naming of each callout where dots '.' splits the name into folders subfolders and the actual callout. So for instance the name "3D Box With Arrow.Yellow.Left" first creates a folder named "3D Box With Arrow", under this you will find a subfolder called "Yellow" and finally the actual callout is called "Left". The <Legacy Items> folder contains callouts to support wink projects created in version 1.0.



You should accompany textboxes with either Next/Previous (and/or Goto) buttons to pause the presentation or add a large value (many seconds) in the "Stay in this frame for time" field.





3.5.7 Shape and Callout Editor

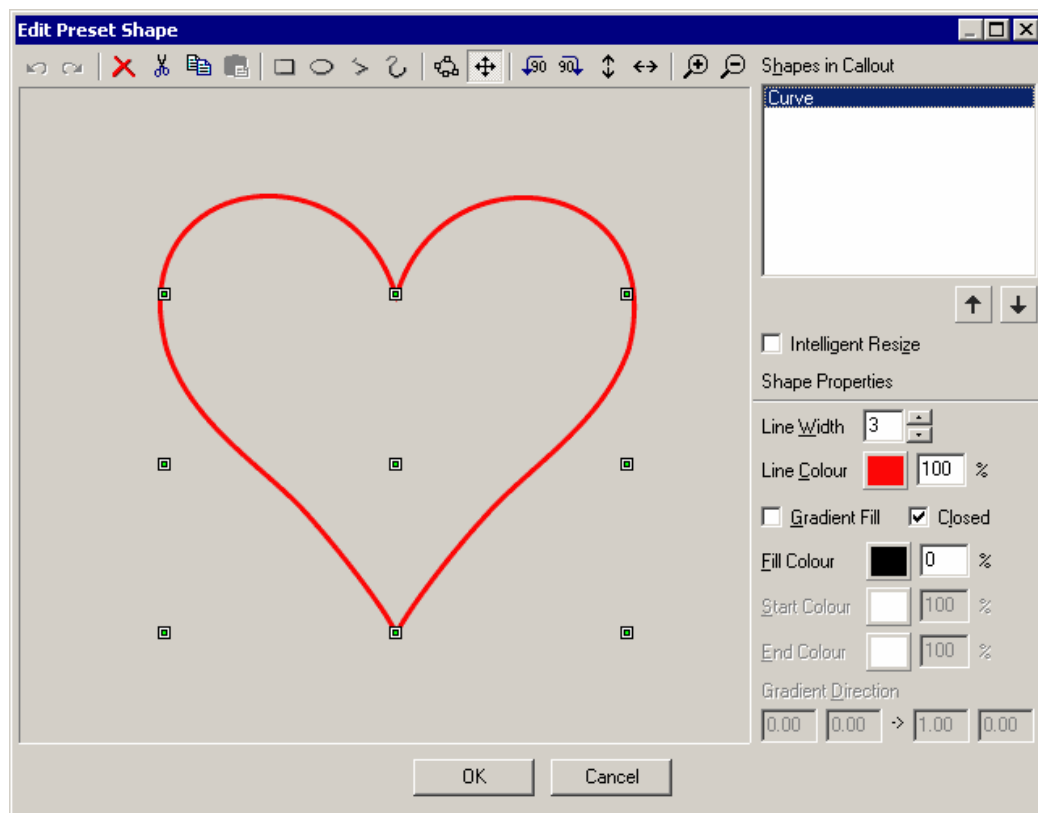
The Shape and Callout Editor is accessible from the Shape and Callout Chooser window when you click either the Edit button to alter an existing shape or callout or Create New to make a new shape or callout from scratch. This is a somewhat advanced tool to design your own shapes and callouts. It might take a little while to

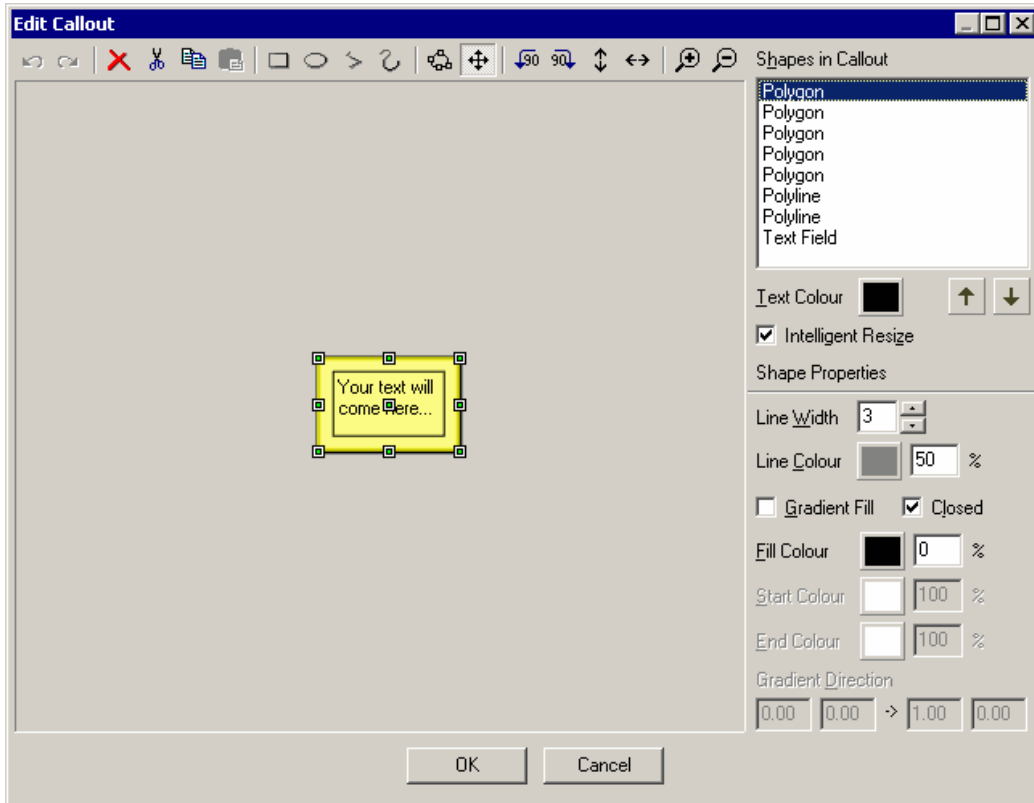
grasp the Shape and Callout Editor but when you have learned how to use it you can make all kinds of fancy looking shapes and callouts.

The Shape and Callout Editor consists of a toolbar at the top, a work area at the left and a properties bar at the right. At the top of the properties bar you can see a list of all the shapes in the callout you are editing. When you select a shape in this list it will also be selected in the work area and you can see the properties of the shape below the list and modify them. Shapes can also be selected directly in the work area.





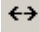

To draw in shapes and callouts Wink provides these tools.

-  **Rectangle** - To create a rectangle shape click on a place in the work area, drag the mouse and release the mouse button in the second position.
-  **Ellipse** - Drawing an ellipse is similar to drawing a rectangle.
-  **Polyline** - Using this tool you can create a shape by drawing a set of connected lines. To start drawing click a place in the work area and the first line starts. Move the mouse to the second position and click, this will end the first line and start the second line from this position. Do this repeatedly until you have created the entire shape. To finish drawing the shape, click the right mouse button.
-  **Curve** - This tool allows drawing any kind of shape and creating the shape as a curve. You can modify this curve later as you want. To draw a curve shape click on a place in the work area and draw the full Shape while keeping the mouse button pressed, and release the button after you have finished drawing.





To modify existing shapes Wink provides these tools.

- 
Edit - This tool allows editing a shape at the basic level, by modifying the points of the shape. If the shape is a line shape (i.e. a polyline or a rectangle), you can edit the end-points of each line. If the shape is a curve (ellipse and curve), you can edit the control points of the curve. You can add new and delete old points on a shape by right clicking an existing point on the shape and choose the options from the menu.
- 
Transform - This tool can move and resize a single shape at a time. Just select the shape you want to edit, and use the frame around the shape to move and resize it.
- 
Rotate left - Rotates the selected shape 90 degrees counter clockwise.
- 
Rotate right - Rotates the selected shape 90 degrees clockwise.
- 
Mirror - Mirrors the selected shape.
- 
Flip - Flips the selected shape.

Each shape has properties for line width, line colour and fill colour. Fill colour is by default a single colour but clicking a checkbox can change this to be a gradient instead. For gradients there is a start and an end colour and through the gradient direction values you can change both the direction and how dominant each colour should be. The percentage value behind each colour determines the transparency so it can be made possible to see some of the other shapes behind the current shape. The Closed checkbox determines if the line that makes up the shape should be continuous – that is if the start and end point of the line are connected. The shapes will be added to the list in the order they are added to the shape or callout. This order is important to get the correct effects. Latter shapes in the list are drawn on top of earlier shapes in the work area.

The last shape (**Text Field**) in the list is special since it is only used to specify where text can be written inside the callout. The only thing you do to this shape is to change its position and size in the callout. It cannot be deleted. The default colour of the text can also be set right below the shape list. This colour is overridden if you choose another colour in the font dialog for the individual textboxes.

The Intelligent Resize option deals with making sure that a shape or callout still looks good when resized to other sizes than how it was originally created. Basically without this option there will often be problems with any shapes or callouts that is not a basic rectangle because the corners and ornaments that are added to a shape or callout will be resized along with the size of the shape or textbox. When Intelligent Resize is activated Wink will do the best it can to preserve the look of the edges, corners etc. when the shape or textbox is resized.

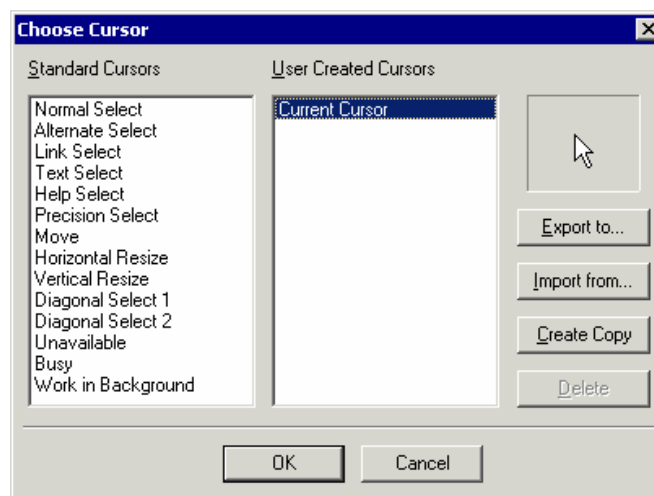
There are two types of shapes: shapes created with lines and shapes created with curves. Polyline and rectangle are shapes created with lines while ellipse and curves are (Bezier) curves. A line-based shape has end-points, whereas a curve shape has control-points.

Finally the Shape and Callout Editor has some basic tools to undo/redo the last actions, the options to delete, cut, copy and paste the shapes in a shape or callout plus the choice to zoom in and out on the work area.

3.5.8 Cursor

When capturing screenshots using Wink the mouse cursor is displayed in the correct position for the individual frames. To make it easy to separate the actual mouse cursor from the cursor in the frame the latter is surrounded by a little box. You can move the cursor anywhere and enable / disable it, as you need.

You can change the cursor image in a frame by double-clicking the cursor element or by selecting it and clicking the Choose Cursor button in the properties bar. You can choose from all the pointers in the currently used pointer scheme (this can be changed in Windows Control Panel) and user defined pointers.



You can export existing cursors to png images and import new cursor from icon (*.ico) and cursor files (*.cur) or gif and png images.

3.5.9 Next/Previous Buttons

When a Next and/or Previous button is displayed in a frame the presentation will pause and the user has to click one of the buttons to continue. This gives control to the users and enables them to go through a presentation at their own pace.

A Next button will continue directly to the next frame in the sequence while a Back button will go back to the previous frame with any type of button.

Like the other elements in a frame you can enable/disable each type of button by clicking their checkboxes in the properties bar and by default they are placed in the center of the frame. They can be moved by dragging them around in the frame or by editing their position values in the properties bar. The buttons can be placed in different positions on each frame.

You can use your own images for the buttons by clicking the Choose Image button at the bottom of the properties bar to change the image. A lot of formats are supported for the buttons including PNG images and icons where you can have transparent areas with full alpha channel to enable the use of cool looking buttons.

3.5.10 Goto URL Button

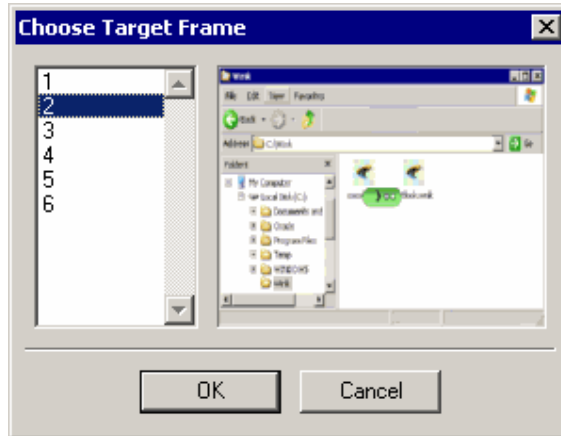
The Goto URL button is used to open a webpage when clicked. When you choose the Goto URL button on the Properties bar the Specify URL to launch window opens. Enter the URL in the URL to launch field. Leave the next field blank if you wish the URL to open in the current browser window. If you wish the URL to open in another browser window enter the correct standard HTML window name. It is also possible to enter email links that open in the users email program (mailto:email@address.com).

3.5.11 Goto Frame Button

The Goto Frame Button can be seen as a general-purpose version of the Next/Previous Buttons and you decide which frame the Goto Button should jump to. This enables the creation of more complex flows through a presentation than just a linear flow from start to finish.

For e.g. If you are showing two ways to do a particular action in your presentation, you can capture screenshots of both ways and give the end user the option to choose which way he/she wants to see. Another use would be if there is both some basic knowledge and more advanced knowledge in a presentation. Here it would be possible to make the option to jump directly to the advanced knowledge if the user already knows the basic stuff. Finally when reaching the end of a presentation it would be obvious to create a Goto button that goes back to the first frame and in this way becomes a restart button.

To add a Goto button click the Add Goto Frame button in the properties bar. This will also open the Choose Target Frame window where you can select the target frame. The target frame can be changed later by double-clicking the button in the main view or by selecting it and clicking the Choose Target Frame button in the properties bar.



Each time you use a Goto button it is recommended that you refer to it from a textbox to tell the end user what it does. See examples of this in the included tutorial files.

When you decide to move some of the frames in a project to another place in the sequence of frames Wink will make sure that Goto buttons always points to the same frames (by content not number) that you decided from the start. If you delete the frame that a Goto button points to then the Goto button will also be deleted.

Like with the Next/Previous Buttons mentioned above you can also change the image used by each Goto button..

3.5.12 Background Image/Colour

The purpose of adding a background image or background colour is to further customize the presentation to your needs. You can have a logo, name or copyright notice showing all through the presentation or add a background that looks like a TV set and use Next/Previous buttons as the TV's controls while showing the actual presentation on the screen.

A background image or colour is added to the presentation using the button at the bottom left of the properties bar or through the menu "Project → Choose Background Image". You can choose between a simple solid background colour or load an image file created in another program.

When using a simple colour background you must specify how large the background area must be and the fill colour. The size of the background area must be at least the size of the frame images in the project. Information about the size of the frame images can be seen in the status bar at the bottom right of the Wink window or be found through the menu "Project → Information".

After having added a background image/colour you will notice that the frame images/screenshots by default is placed at the top left corner of the background image/colour. To change this position you can drag the frame image by its border or edit the Frame Position values in the advanced properties bar.

If you want to remove a background image/colour from a project you just have to uncheck the checkbox for this option in the properties bar. Be aware that this removes the background from the project and does not just disable it. If you want the background back at a later time you have to choose the colour or load the original image again in the Choose Background Image dialog.

3.5.13 Shift All Elements

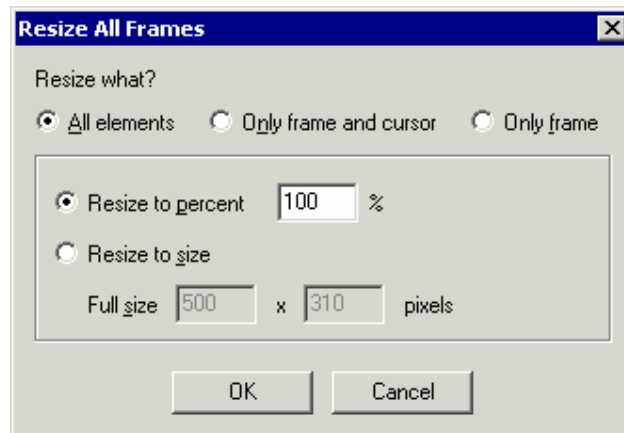
If all elements in all frames have to be moved to another position use the “Project → Shift All Elements” dialog. You specify by how many pixels all elements (including the frame image/screenshot) have to be moved. You can enter negative values if you want to shift elements upwards or to the left. This option is only available when a background image/colour is used in the project.

3.5.14 Crop All Frames

Crop means you remove part of all frames in the current project e.g. if you have created a project based on screenshots of the entire screen, you might want to remove the bottom part showing the taskbar. Use the “Project → Crop Frames” dialog for this purpose.

The dialog displays the current size of frames in the project and you must then specify the area to which you want to crop the frames. If you use a background image/colour in the project Crop Frames won't affect the background but only the frame images/screenshots.

3.5.15 Resize All Frames



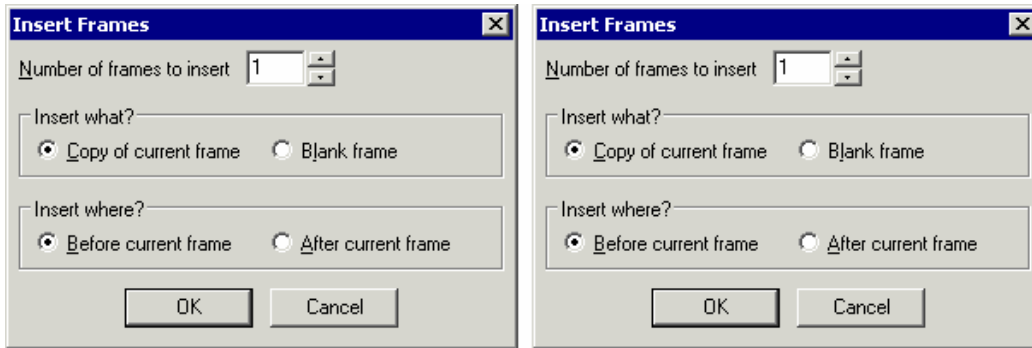
This feature gives you 3 options on what to resize:

1. All elements in the project (with the exception of textboxes and frame titles)
2. Only frame and cursor
3. Only frame

You can enter either the percentage value or an exact pixel size for the new size. Be aware that this feature will give the presentation a slight blurred look because the sharpness of images will be lost when resized.

3.5.16 Insert and delete frames

New frames can be inserted in a project through the menu “Image → Insert Frames”. You can insert frames before or after the current frame and they can either be a copy of the current frame or blank frames (used to paste images/screenshots created by other programs). When inserting blank frames into an empty project you will be asked for the size of the frames to insert.



You can delete selected frames using the delete key/icon or going through the menu “Edit → Delete”.

3.5.17 Editing the sequence of frames

You can use standard drag-and-drop, cut, copy and paste tools to work with the frames in the thumbnail list of the project.

When you copy a frame in the thumbnail view, all the elements (frame, buttons, textbox, title etc.) are copied and when pasted it will create a new frame.

There is another option called Copy Merged in the Edit menu. This will merge the frame and all elements into a single image. If you paste an image that has been created by the Copy Merge option this image will *not* create a new frame but the image will be inserted into the current frame and the elements will not be editable any more as they are a part of the image. The purpose of Copy Merge is to copy an entire frame with added elements to other programs like an image editor or word processor.

3.5.18 Thumbnails Only View

When there are many frames in a project it can be useful to switch to the Thumbnails Only view through the menu “View → Thumbnails Only” (or by double clicking/pressing enter on one of the thumbnails in the sequence). Here you get an overview of the entire project and it is easier to edit the sequence of frames. It is also an easy way to find a specific frame you want to edit. You return to the normal project view through the same menu option or double clicking/pressing enter on a thumbnail.

In both the Thumbnails Only View and when the thumbnails list is active in normal project view you can easily navigate to another frame by just typing the number of the frame you want to see.

3.6 Rendering the flash presentation

To create a flash presentation use the menu “Project → Render”. If you haven't named the output file yet the Project Settings dialog will popup first for you to enter the name. Also if you have chosen to use a palette but haven't created one yet, the palette dialog will be shown for you to do this before starting to render.

Rendering creates either a flash (.swf) file with a corresponding HTML file (in the

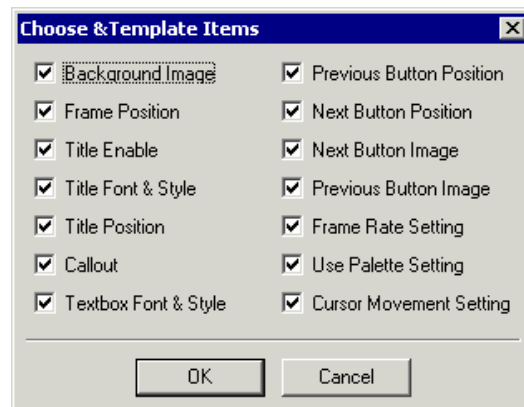
same folder) or a windows executable (.exe) depending on your choice in the Project Settings. To view the presentation you can choose menu “Project → View Rendered Output”.

3.7 Templates

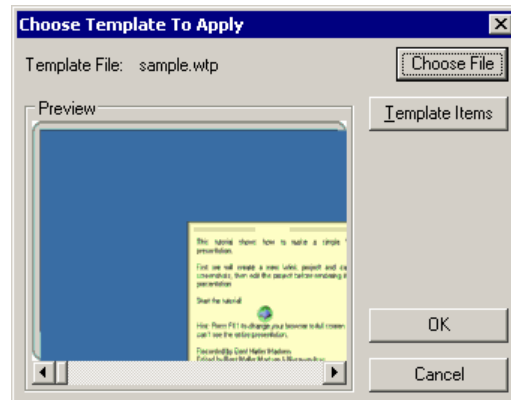
One of the advanced features of Wink is the option to create templates with many of the settings/properties that apply to a project. You can use templates to make consistent presentations with the same look without having to do the same customisations each time.

Not all settings/properties can be saved in a template because some settings will seldom or never apply to all frames in a project or to more than one project. In the schema below you can see which items that can be saved or not saved.

Templates are created based on the settings of a chosen frame in the project. So when you want to create a template you first have to find (or create) a frame with all the correct settings. Then use menu “Project → Save Template”. This opens the choose dialog where you select what items to save in the template. Press OK and a Save dialog will appear to specify the template file name. Templates are by default saved in the “Templates” subfolder in the Wink program folder.



When you want to apply a template to a project (all frames) use the menu “Project → Apply Template”. This will show the Choose Template dialog. Choose a template file and see a preview of the current project with the selected template. You can scroll through all the frames in the current project with the scrollbar at the bottom. To select which template items to apply you can use the “Template Items” button.



Note: All position items from a template are based on the size of the frame in the original project from which the template was created. So applying a template to a project with different frame size may not produce good results. If the size of the current project is smaller than the original project some elements might even be placed outside the viewable area.

3.8 Export/import text to and from file

All the text that you add to a project in textboxes and titles can be exported to and imported from text files. This provides an easy way to translate or just proof read

projects by exporting all the text, translate/proof read it externally in a text editor and then import it back into the same project.

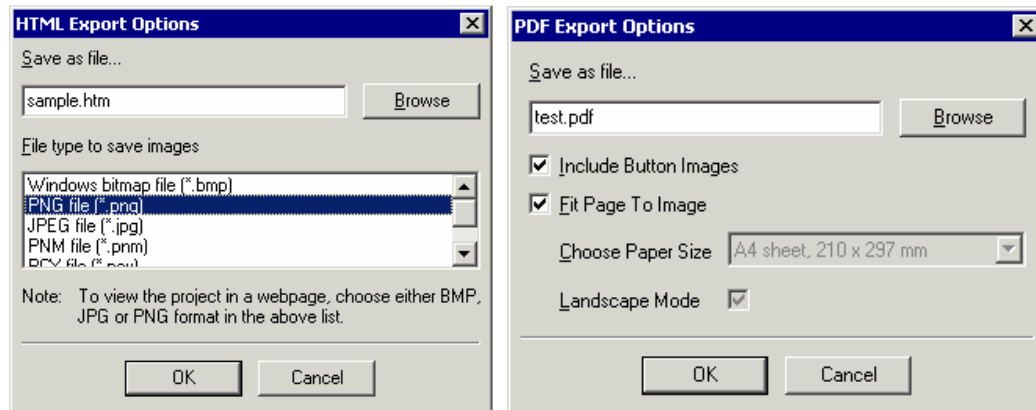
If the changes you have made in the text file can't fit in the project's original textbox Wink will automatically resize the callout when you import the text. Though it can still be worthwhile to do a quick look over of the frames with textboxes afterwards to see if they still look fine.

Note: If you decide to edit the text file in a word processor like Microsoft Word you have to save the document as plain text again. Otherwise Wink won't be able to read it.

3.9 Export to HTML, PDF, PostScript and image files

Wink can export the project to HTML, PDF and PostScript files. This gives you an easy way to present the subject to your end users in a format other than the flash presentation. For instance some users may want to print the presentation, which isn't possible with a flash file. If a HTML or PDF file is placed next to the flash presentation on a website the users have more options.

The images in the exported file will look exactly like the frames in the project and the buttons will still work in all the formats.



When exporting to HTML you have to choose the format used for images (the images are saved as separate files). The best image format for HTML files is PNG (for screenshots of programs). If any frames contain photos then use JPEG.

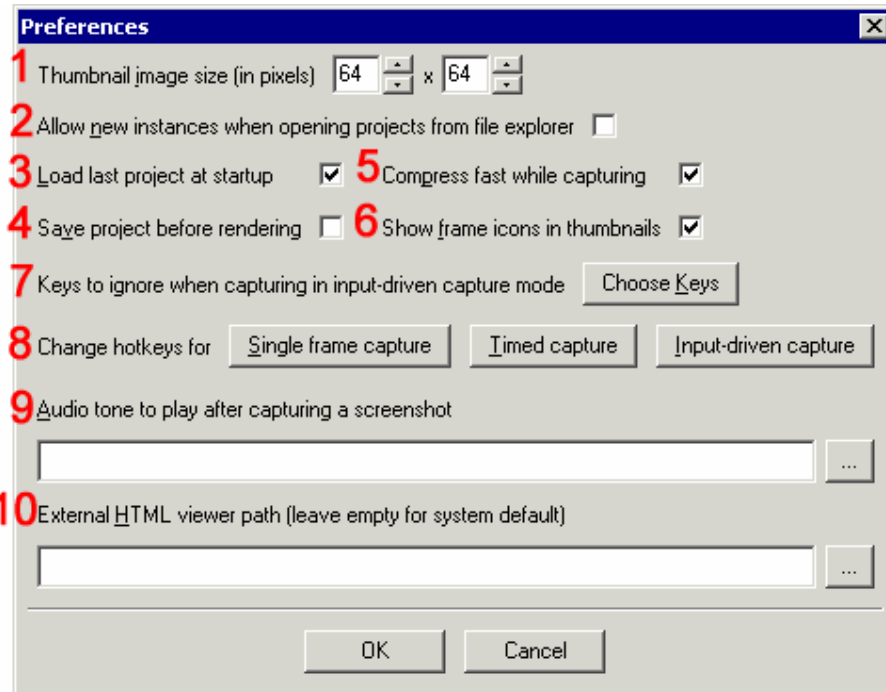
Note: Use BMP, JPG or PNG formats if you want to be able to see the images in the HTML file. Use the other formats to export frames and use in other programs.

For PDF and PostScript you have the option to decide the paper size and orientation for the export, while the option to "Fit Page to Image" is limited to PDF Export. You can also choose to not include buttons from the presentations if the exported document is going to be printed.

3.10 Preferences

Wink's preferences can be found in the menu "File → Preferences" where you can specify some general settings for the program.

1. Thumbnail image size sets the maximum size the thumbnails can have (the thumbnails will maintain the aspect ratio as the screenshots).
2. By default opening a Wink project from the file explorer while Wink already is running will open it in the current instance of Wink. You can change this setting to open a new instance instead. Remember you cannot drag-and-drop items between different instances of Wink.
3. Wink will open the last used project at start-up but you can disable this action if you often open Wink to create new projects.
4. Makes Wink save the project automatically before rendering.

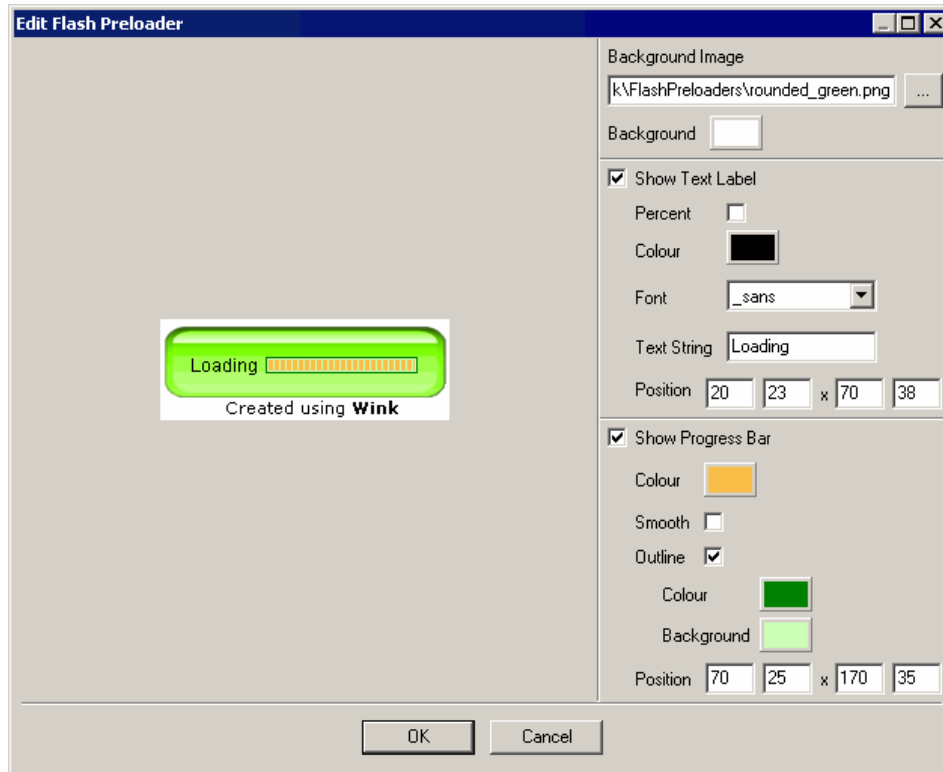


5. “Compress fast while capturing” improves capture efficiency while taking a little more memory..
6. Frame icons are small icons below the thumbnails that show details about that frame - if a value is specified in “Stay in this frame for time”, if any button is used and if a textbox has been added for each frame. These icons can be very useful to find the thumbnail/frame you want to edit. If both a value is specified in “Stay in this frame for time” and one or more button is used in a frame you will only see the button icon because the button overrides the “Stay in this frame for time” value.
7. Input-driven capture can capture all keystrokes except modifier keys (Alt, Control and Shift) used alone and Alt + Tab. Besides these keys you can add your own keys/key combinations that should be ignored.
8. The default hotkeys for each mode of capturing can be changed to what you want. (Some default windows hotkeys cannot be used.)
9. Specify a sound file to play when a captured screenshot is added to the project.
10. By default Wink will use the system default browser to display flash presentations. If you want to use another browser specify the path here.

3.10.1 Flash Preloader

A flash preloader is displayed when the presentation is loading in a browser, so that

the user knows that something is happening when loading big presentations. You can choose from the default preloaders or create your own with menu Project → Settings → Add preloader to flash output → Choose → Create New.



A preloader can contain an image or colour background, a text label and a progress bar.

At the top right of the Flash Preloader Editor you can choose a background image. If you don't choose a background image the background colour right below will be used instead. Furthermore if the Text Label and/or Progress Bar are placed outside the area of the background image you will also see the background colour.

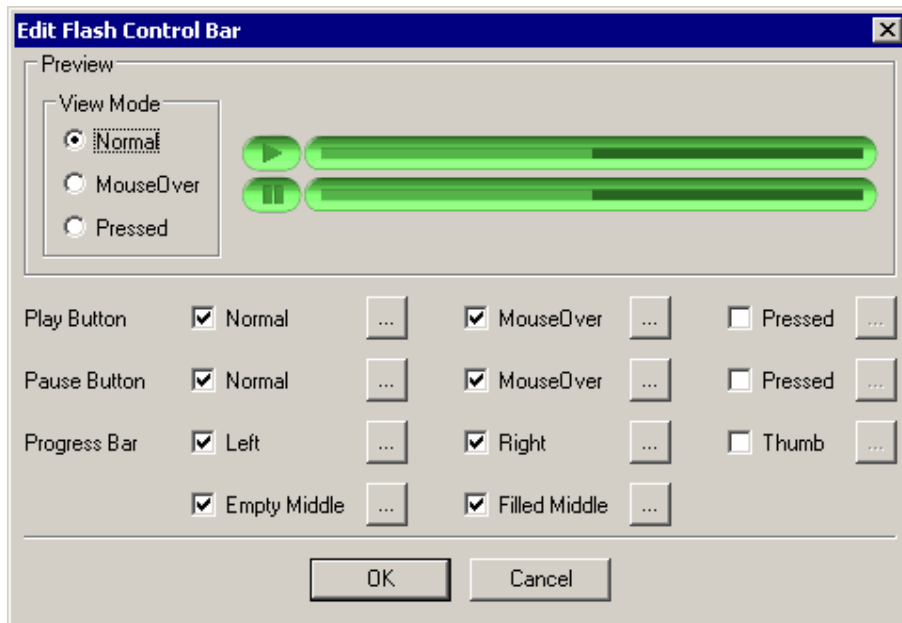
You can enter position values or use the mouse to alter the placement of the Text Label directly in the work area. The content of the Text Label is the text entered in the Text String field and if wanted a percentage value showing how much of the presentation is currently loaded. In order to separate the text and percentage value you must simply press space a number of times after the actual text. The appearance of the text is defined by the size of the Text Label, the 3 different flash fonts and the colour of the text.

The Progress Bar can be placed in the same way as the Text Label and consists basically of a coloured bar that can be smooth or split up into small blocks. This bar can also be surrounded by an outline that has a line and background colour.

3.10.2 Flash Control bar

A control bar displays a progress bar in the flash output and lets the user pause/play any time in the presentation and jump to any place by clicking on the progress bar (only in flash swf file). Like with the preloader a number of default control bars are

supplied with Wink and you can create you own through Wink's Project → Settings
 → Add control bar to flash output → Choose → Create New.



There are two differences between the use of a control bar in a flash swf file and a self-executable exe file. In the swf file the play and pause button are overlaid each other since only one is relevant at a time depending on the fact if the presentation is currently playing or paused. It is also possible to click anywhere on the progress bar in an swf file to jump to this place in the presentation. An exe file is limited in these two cases as the play and pause buttons are placed separately and it is not possible to click the progress bar to jump to another place in the presentation.

When editing (and choosing) a control bar you will see a preview displaying the two possible states regarding if the play or pause button is currently visible. As said above this preview is not correct if you render to an executable file where the two buttons will be placed beside each other. In the edit window you can choose between 3 view modes displaying how the buttons will look when they are not touched, when the mouse cursor hovers over them and when the buttons are pressed down.

The actual images used for all situations are chosen below. It is not necessary to use all types of images for a control bar, as you also will be able to see in the supplied default control bars. For the play and pause button you must supply an image for the Normal mode while the MouseOver and Pressed images are optional. Regarding the progress bar you would normally always use images for the Left, Right and Empty Middle parts while it is optional if you will use either (or both) of the Thumb and Filled Middle to show how far the presentation have come.




















3.11 Shortcut keys

F3	Project Settings
F4	Program preferences
Ctrl + F4	Close project
Alt + F6	Switch between thumbnail and work-area panes
Ctrl + F6	Switch between open projects

F3	Project Settings
F7	Render Project
F8	View Rendered Output
F12	Toggle Properties Bar
Ctrl + F9	Export Text to File
Shift + F9	Import Text from File
Ctrl + A	Select all elements in a frame or select all frames
Ctrl + F	Choose Textbox Font
Ctrl + J	Current / Choose Frame
Ctrl + N	New project
Ctrl + O	Open existing project
Ctrl + P	Edit Palette
Ctrl + S	Save project
Ctrl + Y	Redo
Ctrl + Z	Undo
Insert	Insert Frames
Delete	Delete
Ctrl + X / Shift + Del	Cut
Ctrl + C / Ctrl + Ins	Copy
Ctrl + Shift + C	Copy Merged
Ctrl + V / Shift + Ins	Paste
Alt + Ctrl + ←	First frame
Alt + ←	Previous frame
Alt + →	Next frame
Alt + Ctrl + →	Last frame
Alt + X	Exit program

3.12 Toolbar

Here is a list of all the icons in Wink's toolbar and what they do.

	Create a new project
	Open an existing project
	Save the active project
	Wink preferences
	Undo (the last 16 actions)
	Redo (the last 16 actions)
	Delete the current selection
	Cut the current selection and put it on the Clipboard
	Copy the current selection and put it on the Clipboard
	Paste Clipboard contents
	Move to the first frame in the sequence
	Move to the previous frame in the sequence
	Move to the next frame in the sequence
	Move to the last frame in the sequence
	View/modify the palette for the current project
	View/modify settings for the current project
	Render the presentation from this project with the given options
	View the rendered presentation
	Displays the license and other information about Wink

4 TIPS AND TWEAKS

4.1 Screen size of presentations

When creating presentations you should think about what screen resolution the end users are likely to use. If the user views the flash file inside the browser they won't be able to see the entire area if the flash file is the same size as the end users screen resolution. Also the taskbar takes up some screen space. Therefore you should always be sure to record the presentation in a smaller size than the screen resolution the targeted users are likely to use.

For instance if you make a presentation based on the entire screen size and you know that the end users are like to use a screen resolution of 1024*768, then set your screen resolution (temporarily) to 800*600 when doing the capture. Afterwards when editing inside Wink you can return to the normal (larger) resolution because then you will be able to see the entire (or at least most of the) area of each frame, which makes it easier to edit the project.

You also have the option to resize a project to a smaller area size. But this will also give the presentation a slightly blurred look because it is not possible to keep the images as sharp as the original screenshots.

4.2 Optimal use of input-driven capture

To get the best result from input-driven capture you should work slow doing the actions that should be recorded since Wink might not be able to keep up with you. This does depend on both the size of the area you are capturing and the speed of your computer.

If the last action (mouse click) you have done with the mouse requires some processing from the PC and there is a delay before the screen is updated, Wink will miss a screenshot when the screen is updated. You can take a manual screenshot of this step before processing with the next actions.

Finally when recording typing or other situations where the blinking text caret is visible you will record extra frames because Wink will keep the screenshots even though the only difference between frames is the text caret. To avoid this you can set the text caret to not blink and always be visible through a Windows setting. In Windows XP this setting is in the accessibility options while it is placed under the keyboard properties on Windows 2000. These redundant frames could also be deleted in Wink when editing the project afterwards but it is easier to not record them in the first place.

4.3 Edit multiple frames

One of the cool features of Wink is that you can edit the properties of multiple frames simultaneously. If you select more than one frame/thumbnaill in the sequence the options changed in the properties bar apply to all frames. So you can change the textbox font used in all marked frames and even more interesting when using the advanced properties bar it is possible to align the position of, for instance, the Next button across all selected frames by editing the position values in the properties bar. If multiple occurrences of the edited object type (e.g. multiple textboxes) is present in any of the selected frames then the changes will only affect the frame currently in view to avoid ambiguous changes.

4.4 Editing screenshots in frames

The screenshots originally captured by Wink can be edited afterwards by using an external image editor of your choice. First select the frame/thumbnaill with the screenshot you want to edit and then select only the frame object in the properties bar. You can now copy the screenshot by clicking Copy in the Edit menu or simply pressing Ctrl+C. Now switch to your image editor, paste the screenshot and do the editing. When you are satisfied with the editing, you copy the screenshot from image editor, return to Wink and paste it back into the same frame (using menu Edit → Paste menu or by pressing Ctrl+V).

4.5 Copy frames between projects

You can open more than one project simultaneously in Wink and copy (or drag-and-drop) frames between projects. This way if you have created a project but you forgot to take some more screenshots you can create the remaining screenshots in a new project and copy these frames to the old project.

4.6 Optimize the size of presentations

To optimize the file size of presentations you should **clean** your desktop before capturing screenshots. This also has the advantage that the end users watching the presentation won't be distracted by other things you might have installed on your computer. Some of the things to clean up are:

- Remove unnecessary icons from the desktop (copy them to a folder to easily get them back).
- Disable wallpaper and use a single colour on the desktop.
- In Windows XP set the theme to "Windows Classic" instead of the default "Windows XP".
- Set the title bar of windows to a single colour instead of the default gradient.
- Disable the Quick Launch toolbar.
- Close all non-relevant programs (also in the system tray).

If you won't be showing the desktop or taskbar in the presentation some of these suggestions obviously aren't necessary.

4.7 Maximize the space for showing presentations in a

browser

To be sure that the end users can see the entire (or at least most of the) presentation area you can disable all the elements that usually appears in the browser like the toolbar, address bar, status bar etc. using JavaScript to open the browser window.

If you have a webpage from which the Wink-generated presentations are showed, add the following script code somewhere inside the <head></head> element of that webpage's html source.

```
<script>
function WinkPresentation(file)
{
    window.open(file, 'Wink', 'resizable=1,scrollbars=1');
}
</script>
```

The actual link that will open the html file with the presentation must be added inside the <body></body> element of the html source. For example:

```
<a href="sample.htm" target="Wink"
onclick="javascript:WinkPresentation();" >
    Show sample presentation
</a>
```

In the example above "sample.htm" must be replaced with the name of the html file generated by Wink and "Show sample presentation" should be replaced with the text you want the user to see in the homepage describing the presentation.

4.8 Saving compressed projects

Wink projects can take a lot of space if they have a large number of frames, since all of them are image/video data. When you have finished a project or if you want to send a project to a friend, it is a good idea to save the project using the "**File** → **Save compressed**" menu option. This will compress the project and save. Compressed projects typically occupy 4 times to 20 times less space than normal projects. You can compress them further using any zip utility.

Compressing projects and loading compressed projects take a significant time, so use this only when necessary. All samples distributed with Wink are compressed projects.

4.9 URLs of interest

- DebugMode homepage – <http://www.debugmode.com/>
- Wink homepage – <http://www.debugmode.com/wink/>
- DebugMode User Forums – <http://www.debugmode.com/userforums/>

5 KNOWN ISSUES

5.1 Buttons in PDF files exported from Wink

When using **Continuous view** in Adobe Reader all buttons in a PDF file exported from Wink will go to the page/frame after the actual frame they should go to. The buttons work correct when Adobe Reader is setup to the default Single Page view. This is an issue with Adobe Reader and not Wink and hopefully will be corrected in future releases of Adobe Reader.

5.2 Flash output sometimes looks garbled with palette

This is due to a bug with the Flash player. You can either render the flash output without a palette, or create another palette with a different number of colours to work around this bug.