

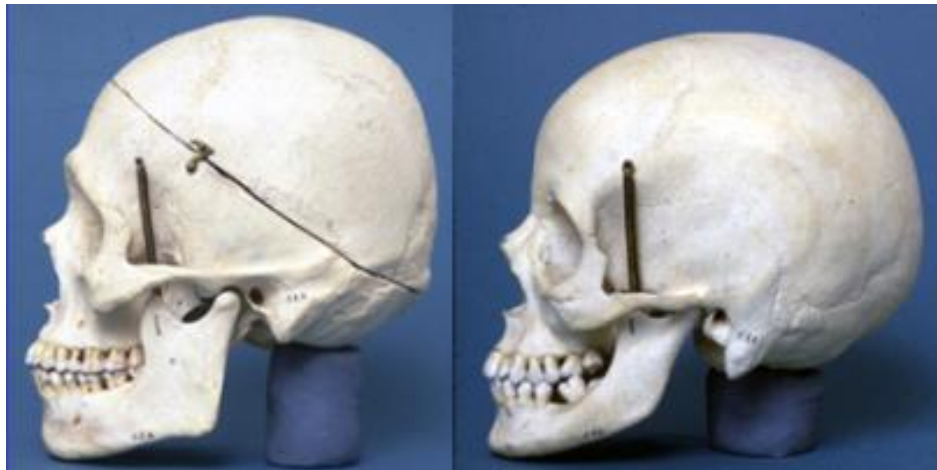
Read pages **360-375**. Complete the following activities/questions as you read. Type in your answers in the blank spaces provided. Please extend on to the second page instead of decreasing the font. **15 points**

1. Label the following as an **osteoblast, osteoclast, or osteocyte**. (3 points)
 - a. _____ Mature bone cells; form the bone framework
 - b. _____ Cells that secrete matrix for bone formation
 - c. _____ Cells that dissolves bone during growth and healing

2. Give 5 examples of types of information bones can tell us. (5 points)

- a.
- b.
- c.
- d.
- e.

3. Using Figure 13-10 and 13-11, label each of the skulls below as “male” or “female”. (2)



4. Determine at least how old each person is based on the descriptions below (3 points):

- a. Pubis and ischium are almost completely united _____
- b. Coronal suture is closed _____
- c. Femur head is fused to the shaft _____

5. Describe 2 ways in which facial reconstruction is done today (2 points).

- a.
- b.