

Chapter 7 DNA Fingerprinting Reading Assignment

Name:

Hour:

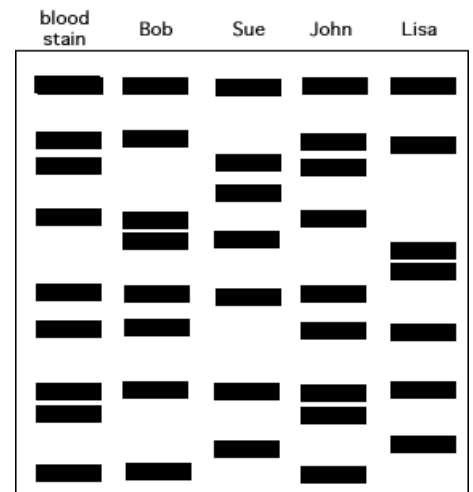
Read pages **158-171**. Complete the following activities/questions as you read. Type in your answers in the blank spaces provided. Please extend on to the second page instead of decreasing the font. **15 points**

1. DNA's structure is a double helix, similar to a twisted ladder. The blue "sides" of the ladder in the picture to the right are composed of what two molecules? (2 points)
 - a.
 - b.
2. The colored "rungs" of the ladder in the picture to the right are called what? (1 points)
3. How do genes and alleles differ? (1 points)
4. What are VNTRs and STRs? (2 points)



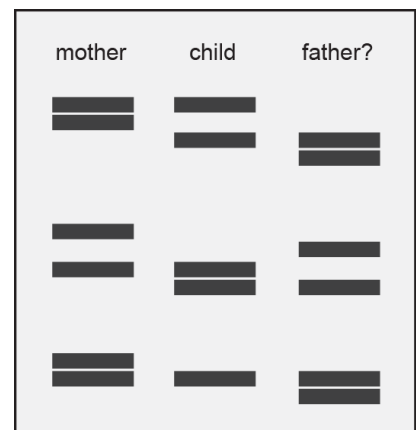
5. What are the two main purposes of DNA fingerprinting (profiling)? (2 points)

6. Does the blood stain match Bob, Sue, John, or Lisa? Explain. (2 points)



7. Of the two purposes you listed in #5, which is #6 an example of? (1 point)

8. a. In the picture to the right, did the child inherit all of the genes from either his mother or father? Explain. (2 points)



- b. Is this the biological child of these two parents? Explain. (2 points)